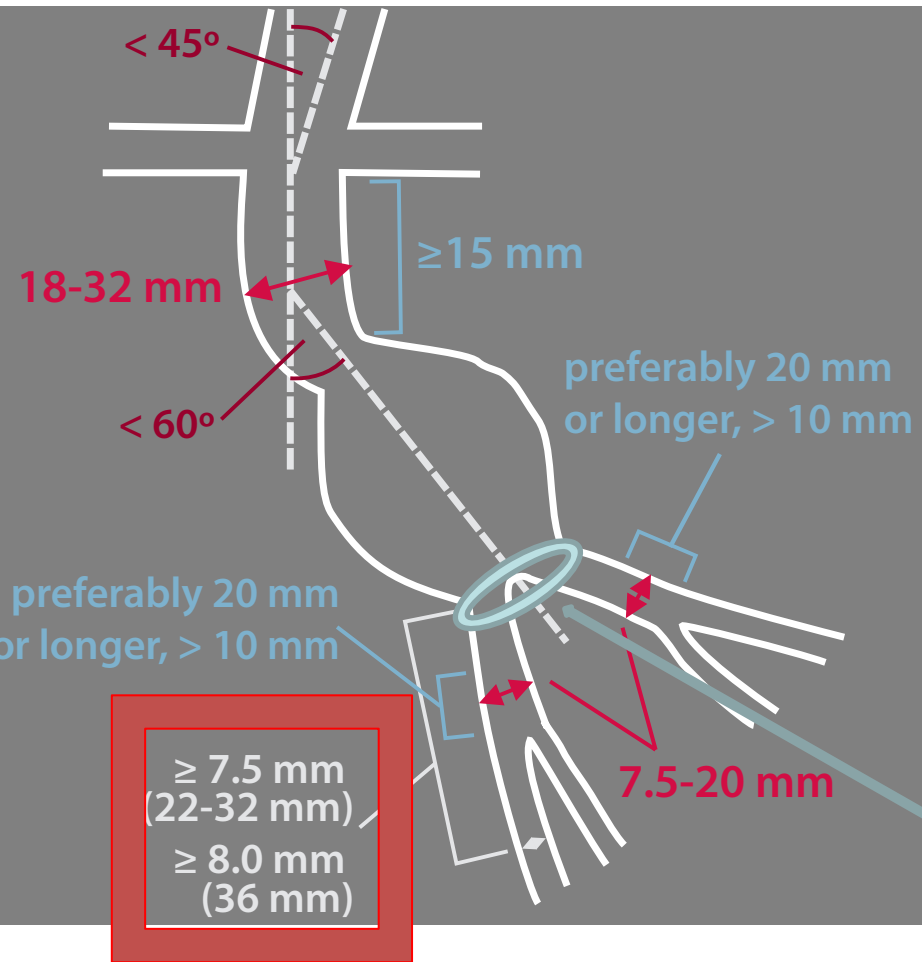


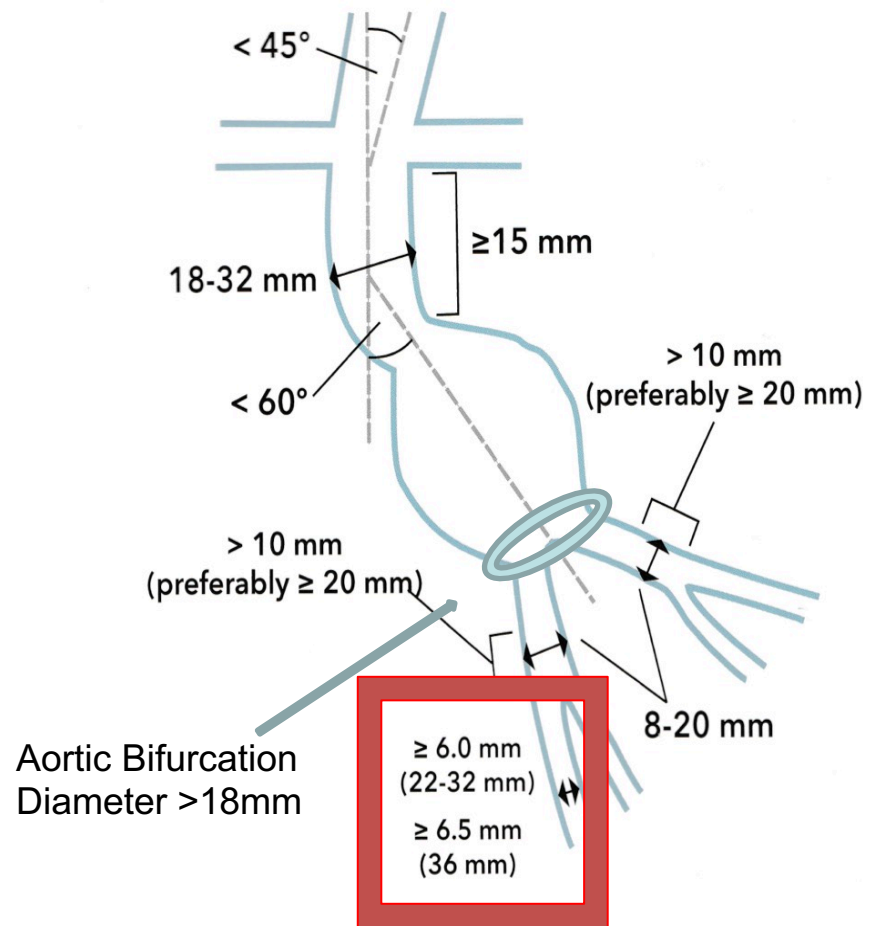
# Cook Alpha Abdominal IFU

# IFU – It's in the Book!

## Flex



## Alpha



# Why?

Off IFU =

- Type Ia/Ib endoleaks
  - Rupture & Death
  - Revision
- Limb occlusion

**Only good EVAR is GOOD!**  
**You have to PRACTICE to become GOOD!**

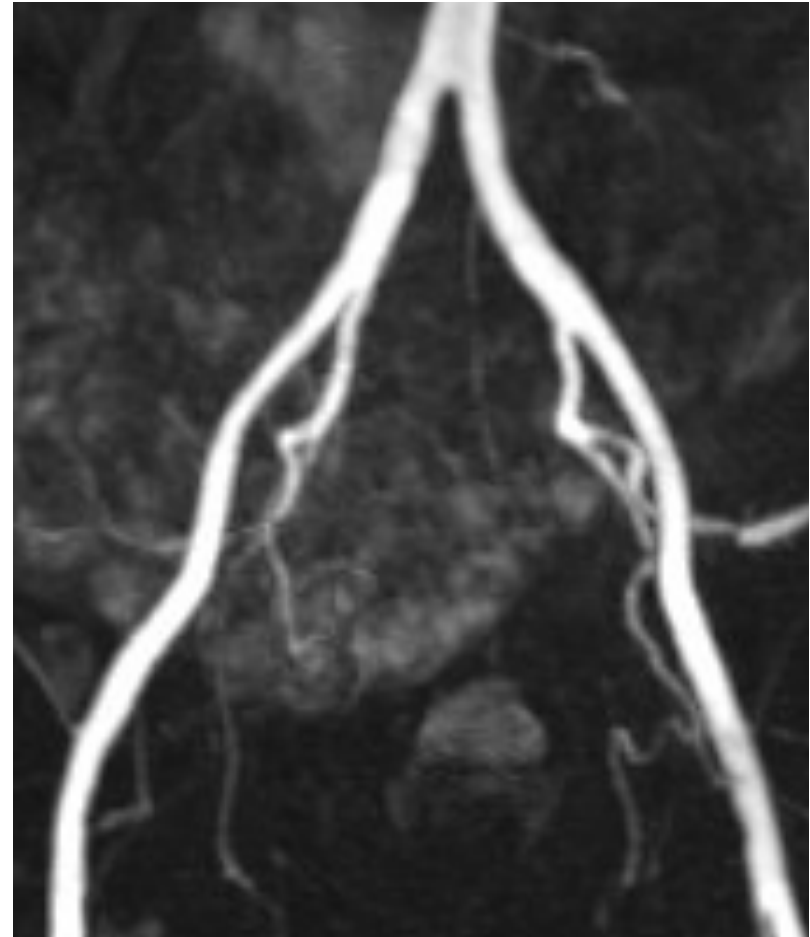
# Access

*Indicated Morphology as per IFU*

Adequate iliac/femoral access

Flex – 7.5 – 8mm

**Alpha – 6 – 6.5mm**



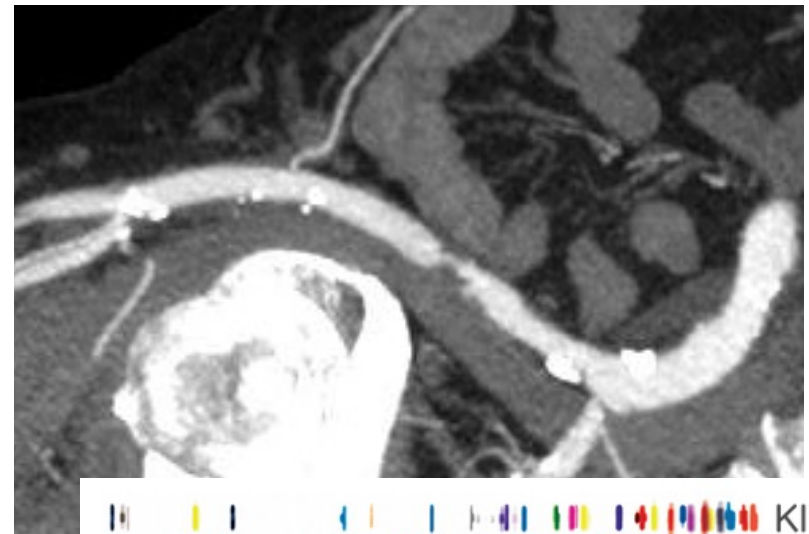
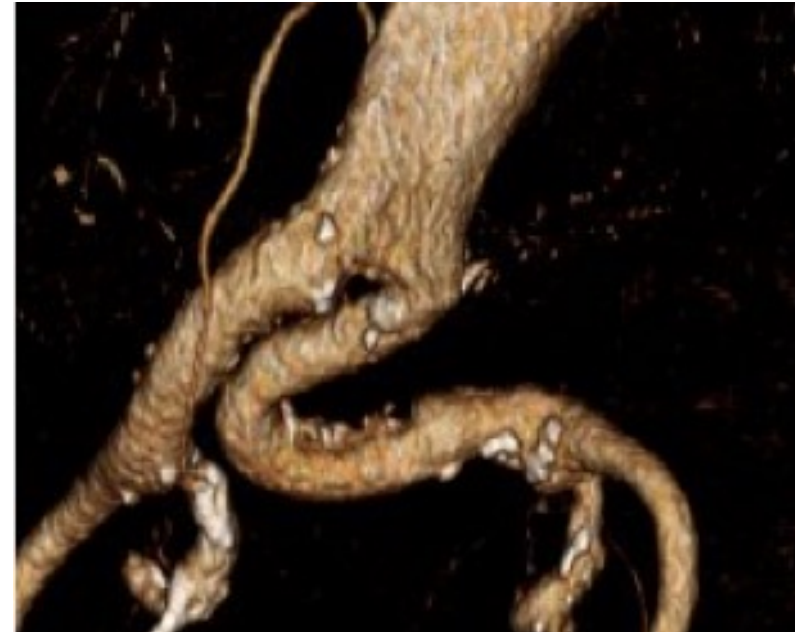
# Access – Off IFU

Significant occlusive disease,  
tortuosity or calcification

*Inability to position and  
implant device*

Unsuitable arterial anatomy

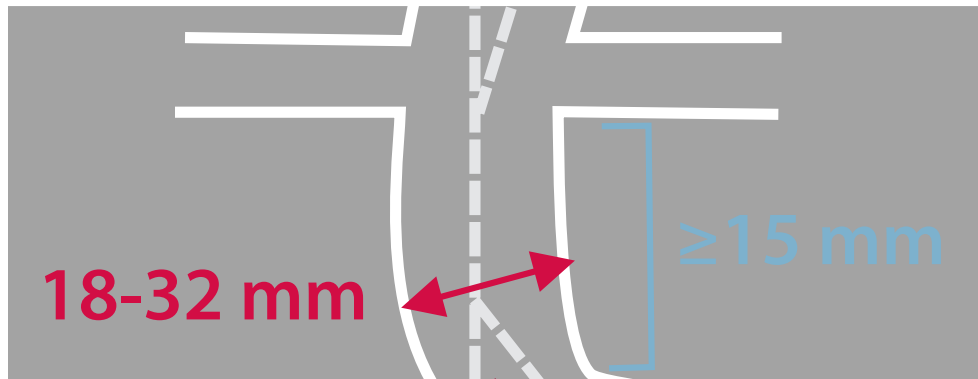
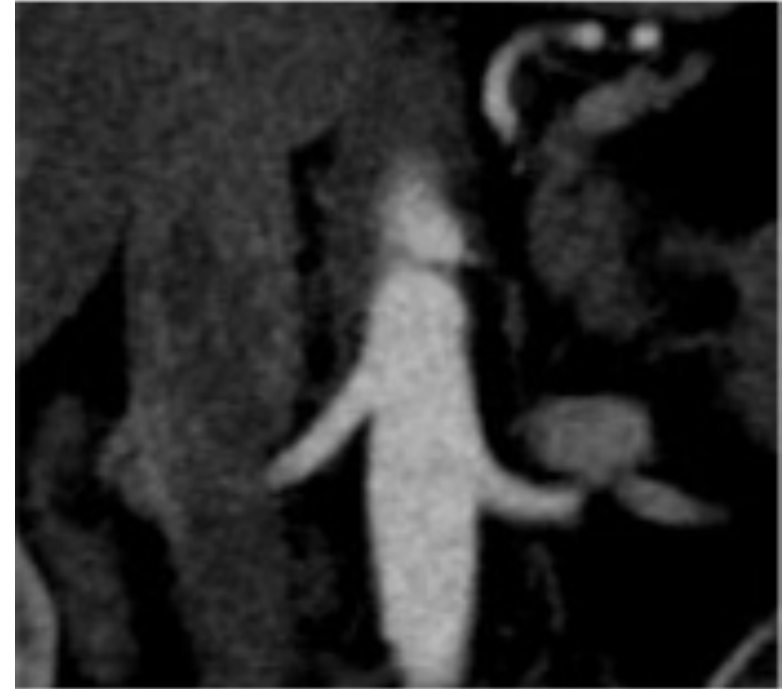
*Inability to position and  
implant device*



# Aortic Neck 1

Proximal neck  $\geq 15$  mm in length  
< 15 mm = inadequate seal

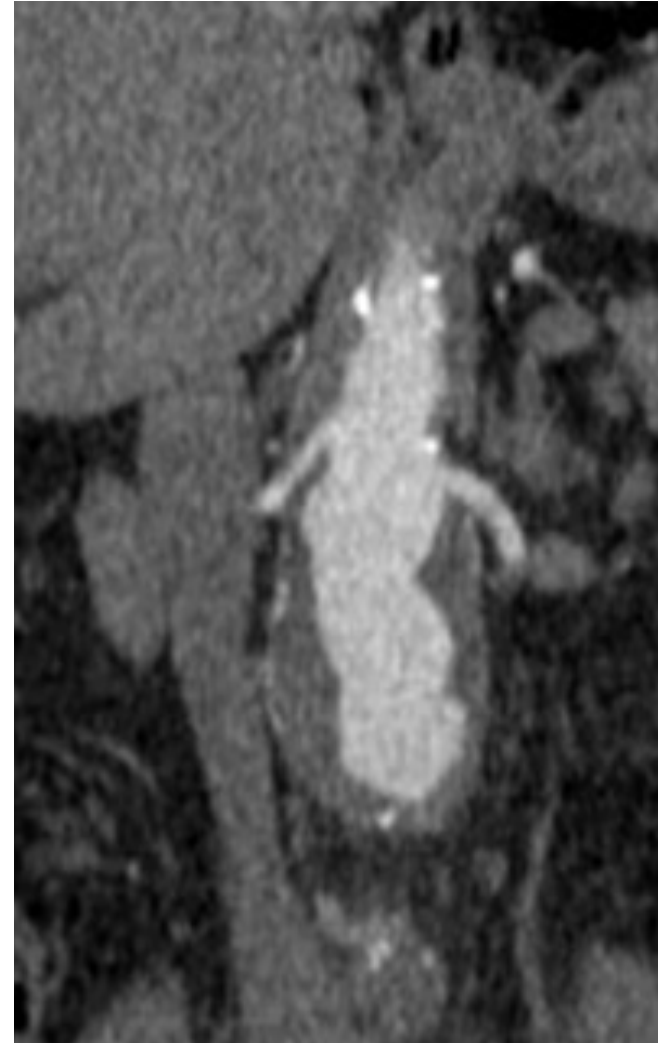
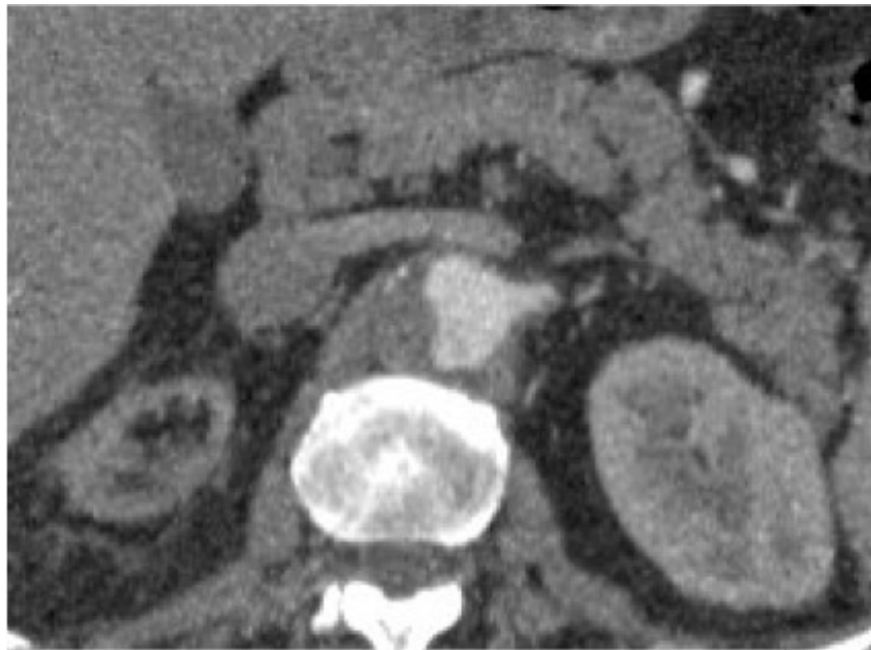
Proximal neck  $\geq 18$  mm or  $\leq 32$  mm in diameter



# Aortic Neck - Off IFU

Proximal neck with circumferential thrombus

*Inadequate seal*

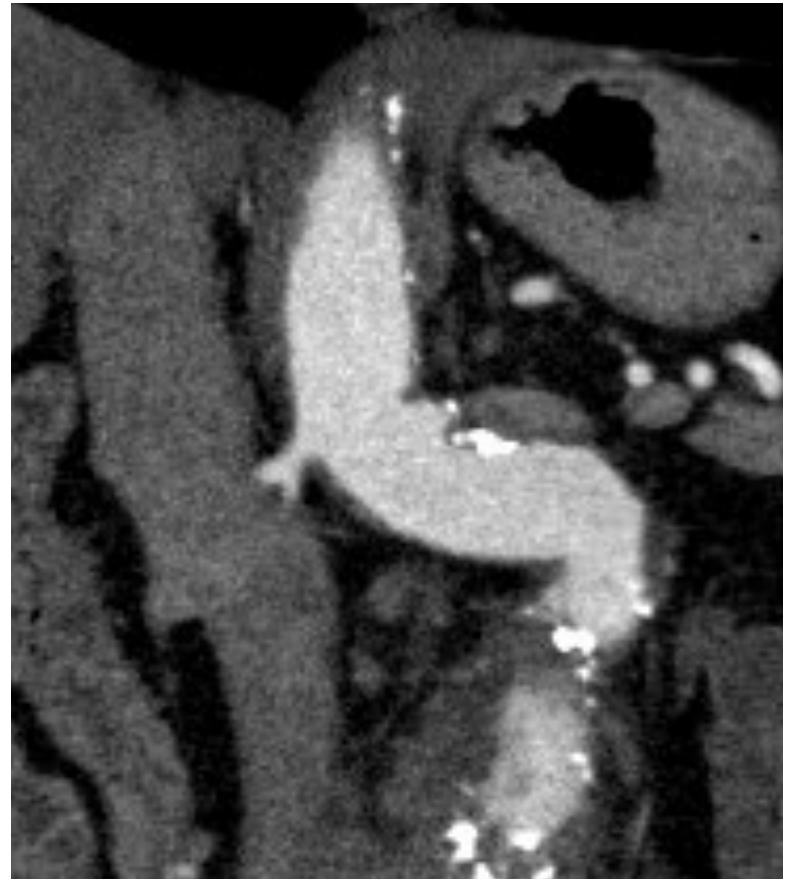
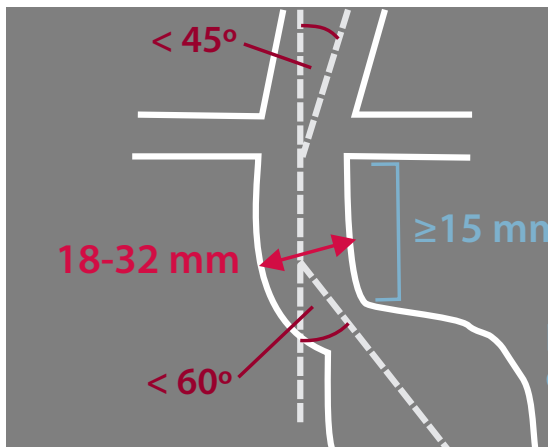


# Aortic Neck 2

Angle  $< 60^\circ$  relative to long axis of aneurysm

Angle  $< 45^\circ$  relative to axis of suprarenal aorta

*(Inadequate seal and increased risk of migration)*

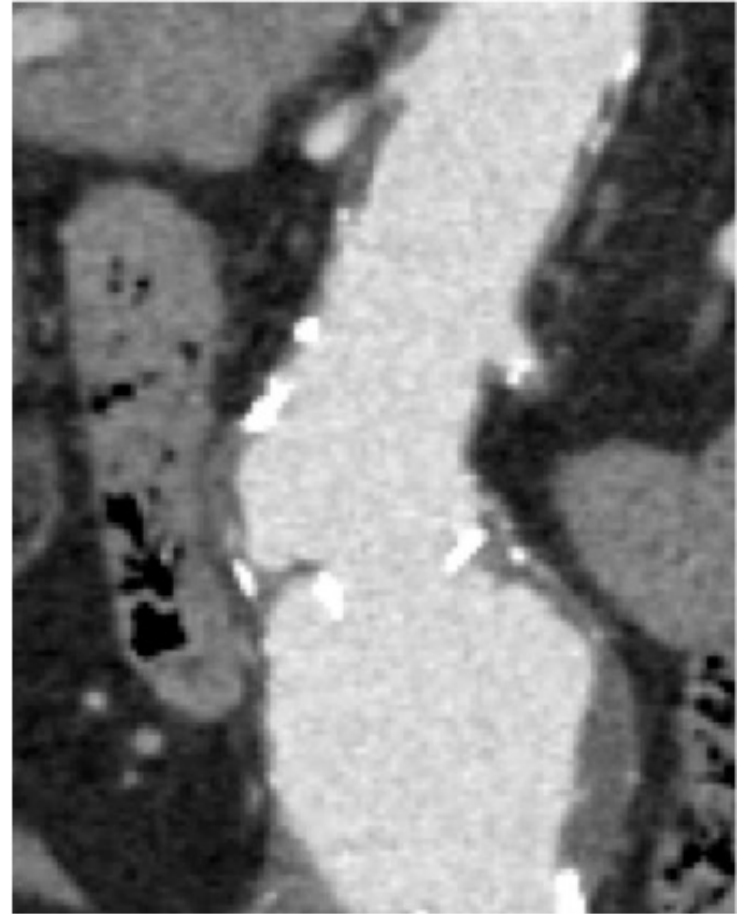
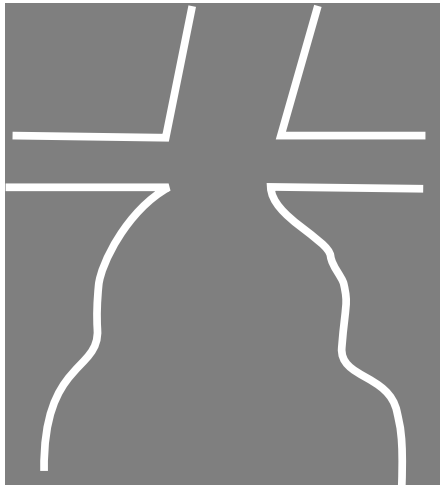




# Aortic Neck – Off IFU

Proximal neck: inverted funnel/cone

*Inadequate seal and prone to migration*



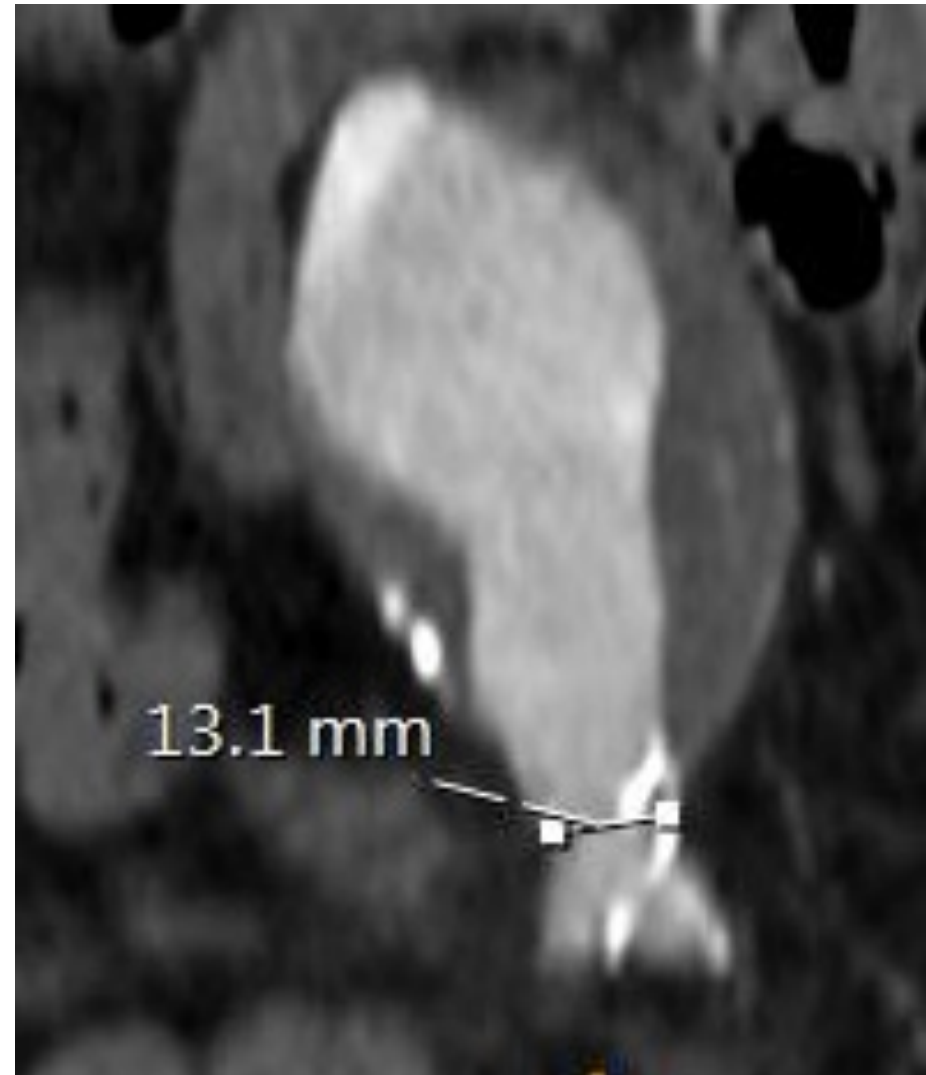
# Aortic Bifurcation

(The only criterion NOT in the booklet)

Narrow aortic bifurcation

*limb competition and occlusion*

***18 mm approximately***



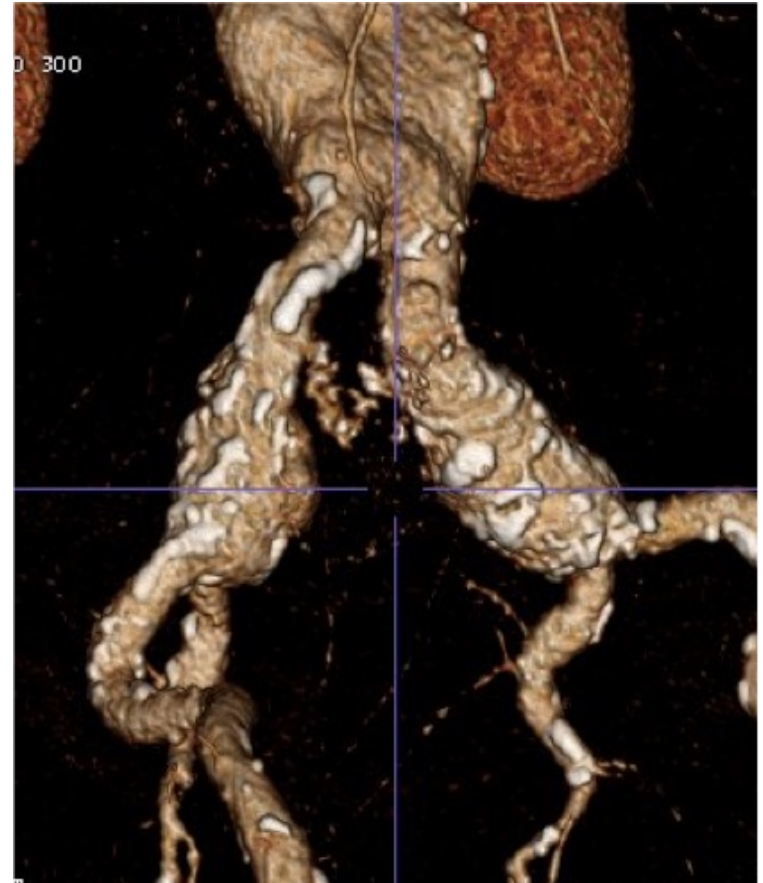
# Iliac Limbs - Off IFU

Iliac distal fixation site < 10 mm in length

*Inadequate seal*

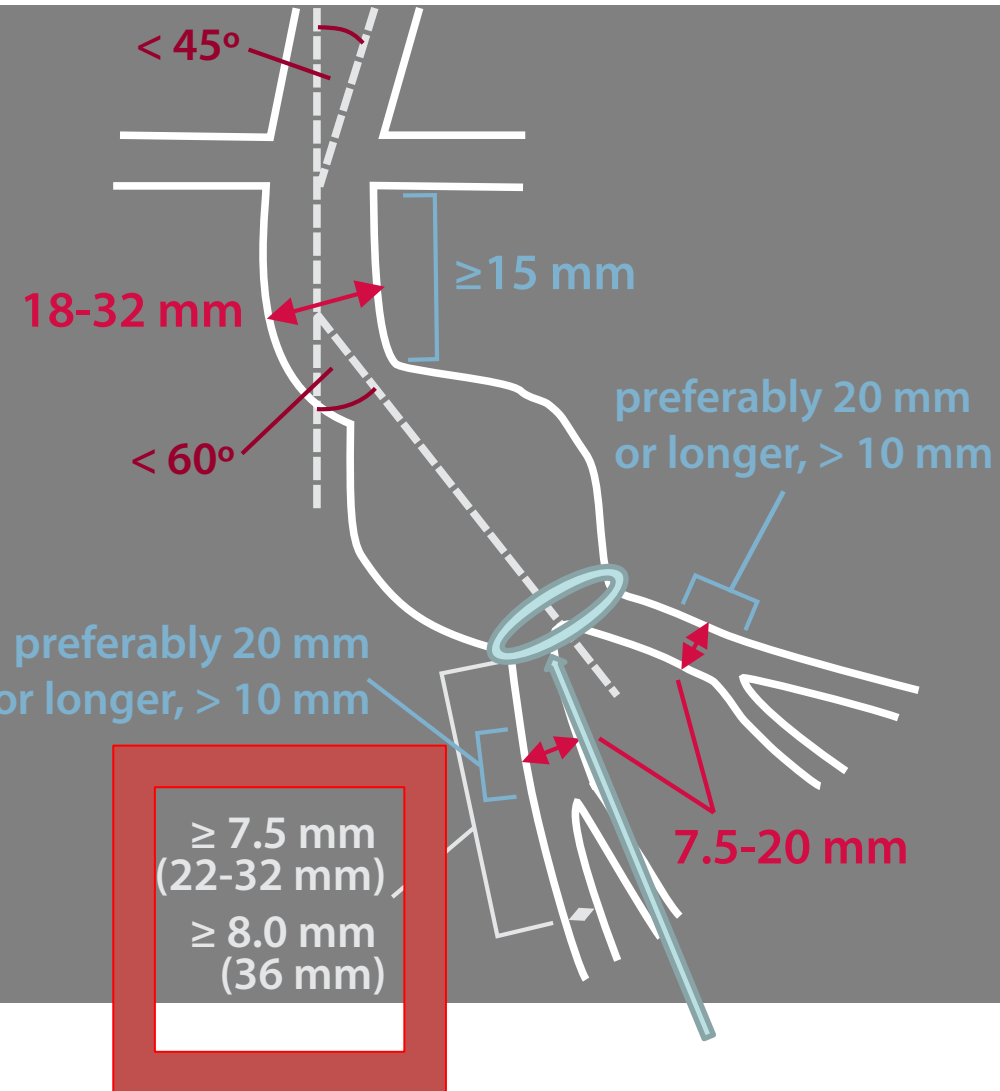
Inability to maintain at least one patent internal iliac artery

*Bowel ischemia, paralysis*



# Summary IFU

## Flex



## Alpha

